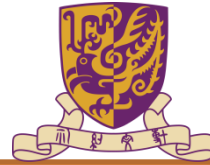


# BUSINESS IN COMMUNITY

*Unexpected Journey in Finding Values*



# Business-in-Community



Software, Chinese  
University of Hong Kong



**Flexible & Open  
Platform**



Schools, Teachers, Students

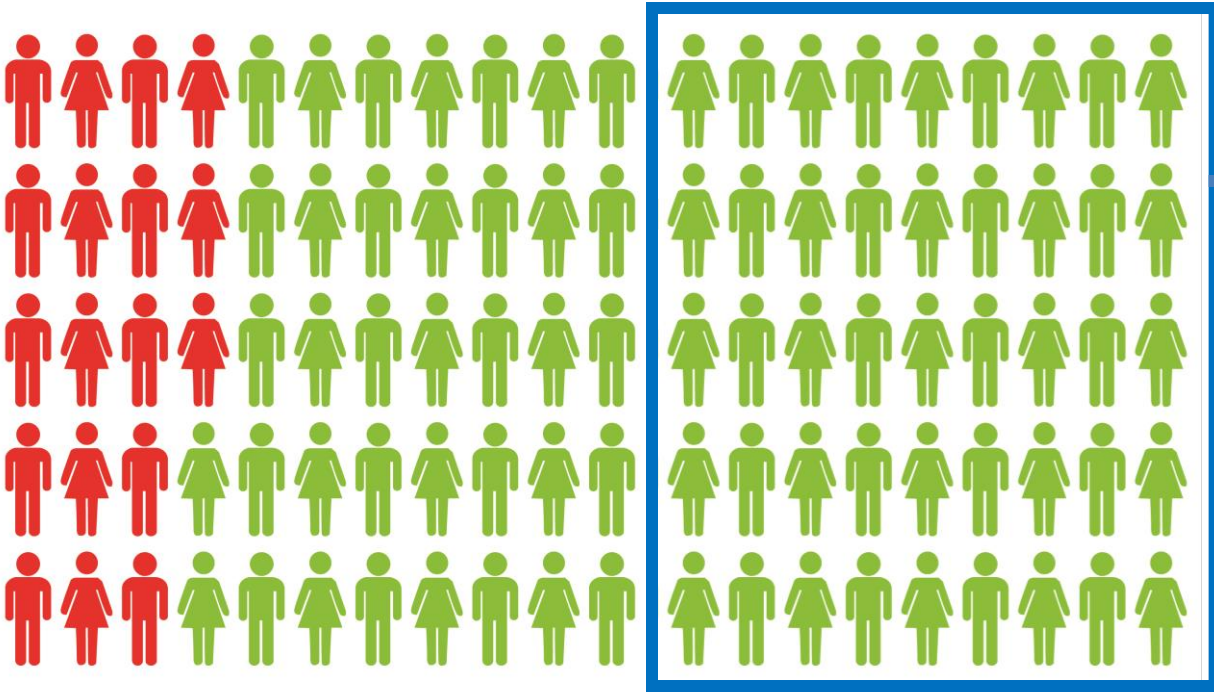
Businesses, Professionals, Retirees



*We Can, Yes, We Can!*

# What Matters Now

**18%** enters  
local Government-  
funded Universities



Lowest  
40% are  
BAND 3  
students

(Year 2014 data)

**82%**



Majority enters workforce



*We Can, Yes, We Can!*

# Entrepreneurship

[Young Innovators Bazaar]



## Engage

[Press Conference]



## Experience

[Job Tasting]



## Prospects

[Career Planning Talk]



## Communication

[English WeCan]



## Inspiration

[Company Visit]





# Project WeCan: 37 Current partners and over 1,000 volunteers

## Corporate Partners:



## Consulate Partner:



## University Partners:





# Benefits to the Corporation

## To Companies:

- ✓ Build staff teamwork and morale
- ✓ Build deeper understanding of business
- ✓ Make a real difference

## To Volunteers:

- ✓ Boost self-confidence
- ✓ Engage with community
- ✓ Sharpen leadership skills



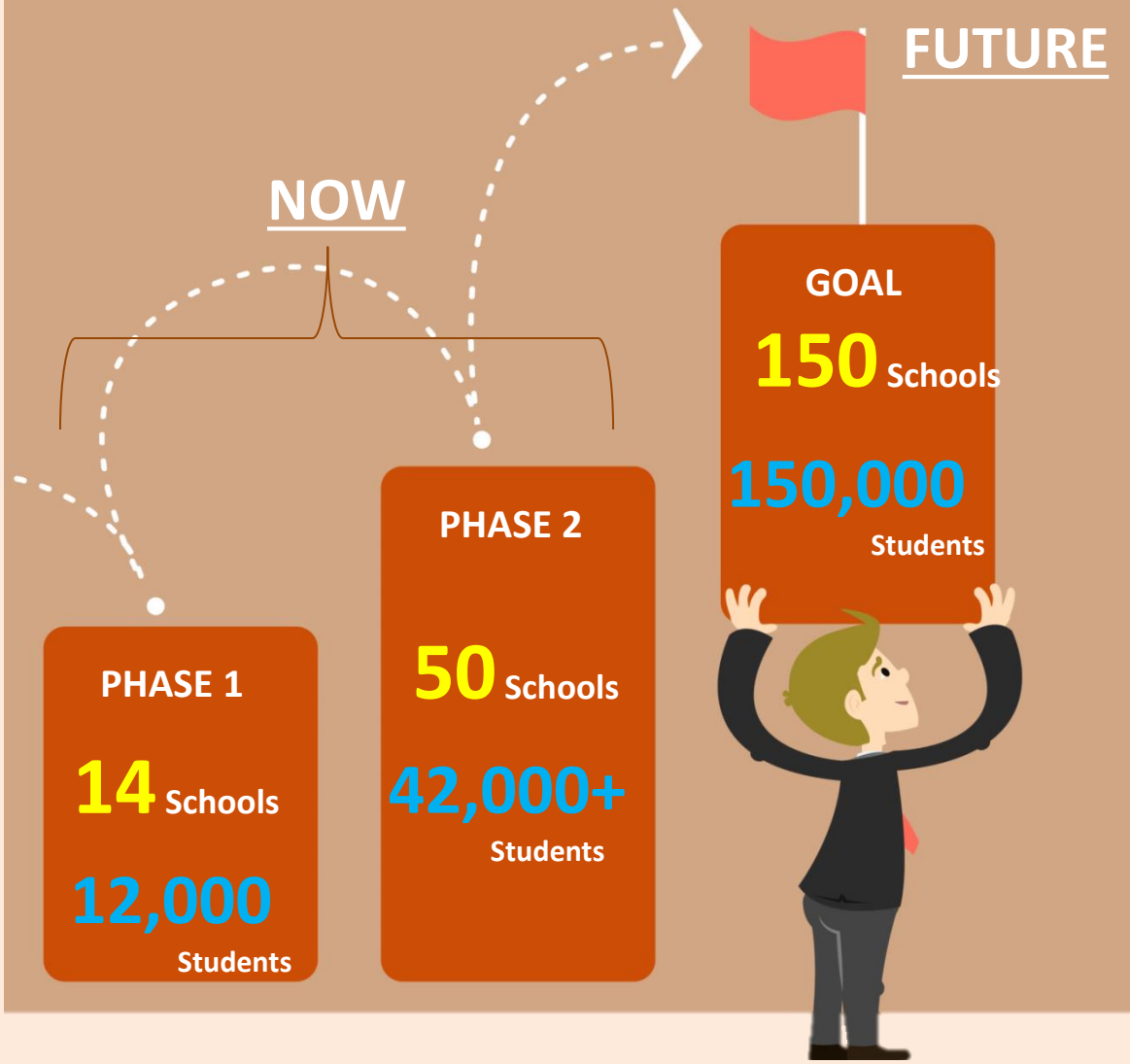
# BENEFITS

## To Schools and Teachers:

- ✓ Strengthen learning environment
- ✓ Improve teaching effectiveness
- ✓ Build school capacity

## To Students:

- ✓ Build confidence
- ✓ Stimulate innovation & creativity
- ✓ Increase exposure



**We can't do it alone!**





# Thank You



 [info@projectwecan.com](mailto:info@projectwecan.com)

 [www.projectwecan.com](http://www.projectwecan.com)

 [projectwecanhk](https://www.facebook.com/projectwecanhk)

